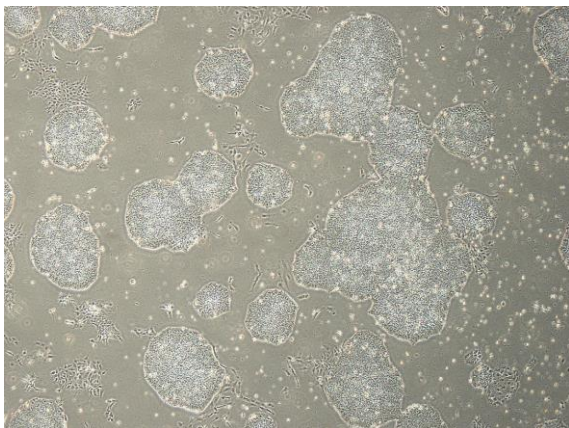
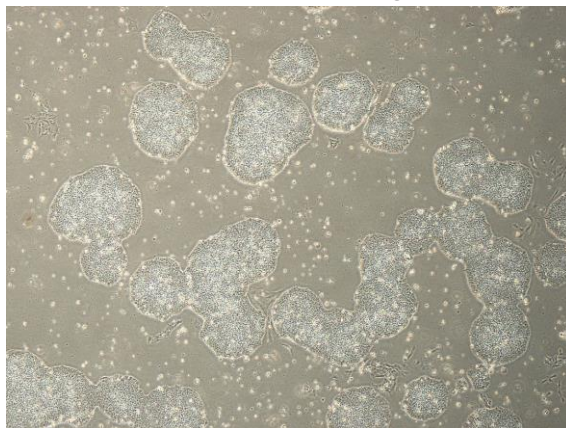


【 CiRA-j-1232 】 Morphology of iPSC colonies

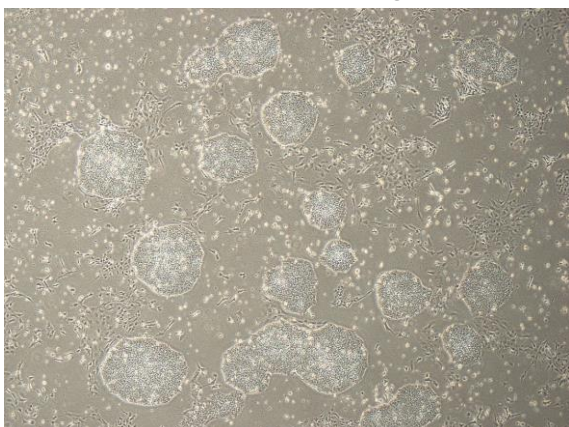
CiRA-j-1232-A: passage-3



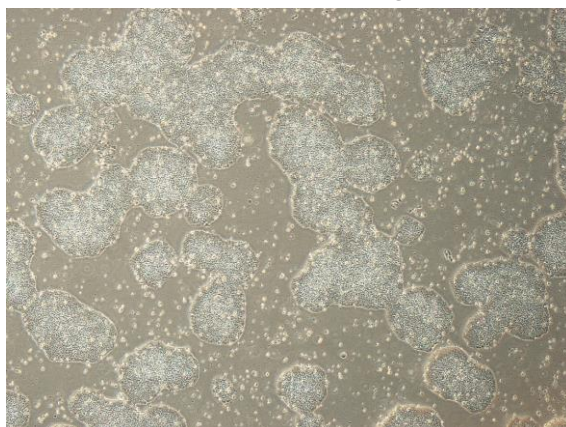
CiRA-j-1232-B: passage-3



CiRA-j-1232-C: passage-3



CiRA-j-1232-D: passage-3



CiRA-j-1232-E: passage-3



CiRA-j-1232-F: passage-3



(All images were captured at 4x magnification)